

## AIRPAD SEATING CUSHIONS

Engineered for patient comfort and skin integrity, the AirPad™ Cushion line provides exceptional pressure redistribution and airflow for patients at risk of skin breakdown. The air grid design promotes even weight distribution and pressure relief, reduces shear and friction, and enhances microclimate control.

The construction provides a stable, supportive surface that promotes skin integrity and comfort during extended sitting or mobility use. Ideal for chair-bound, wheelchair, or bed-to-chair patient positioning needs; post-surgery, maternity perinatal protection, home, auto and office use.

## FEATURES

- Pre-inflated/valveless and Inflatable w/ hand pump (large valve)
- Open-weave offers a breathable buffer for temperature regulation and protecting skin integrity
- Sizes: Standard (17x17x1.5in) and Bariatric size (28x22x2in)
- Low-profile design for supportive foundation, stability and ease for getting into and out of a chair
- Lightweight and portable
- Versatile positioning: suitable for chair-bound, reclined, or partially mobile patients
- Anti-microbial and moisture resistant material
- Waterproof and easy to wipe clean with standard disinfectants
- Single Patient Use
- Latex-Free

## VERSATILE USE ACROSS MULTIPLE CARE SETTINGS:

- Acute Care
- Hospital/ Long-Term Care
- Skilled Nursing
- Rehabilitation
- Home Care
- Bariatric Care



17x17x1.5in



XL/Bariatric 28x22x2in



## Ordering Information

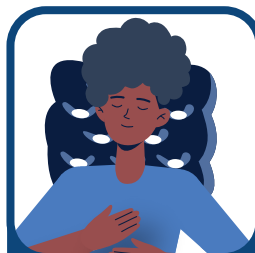
HCS#	Item #	Description	Size	UOM
83400	418425	AirPad Seat Cushion, Pre-inflated, Valveless, Latex-free	Standard 17x17x1.5in	300 lbs. 12ea/cs
83401	418558	AirPad Seat Cushion, Inflatable w/Valve and Pump, Latex-free	Standard 17x17x1.5in	300 lbs. 12ea/cs
83402	418559	AirPad Seat Cushion, Inflatable w/Valve and Pump, Latex-free	XL/Bariatric 28x22x2in	700 lbs. 12ea/cs
83400PMP	418560	Hand Pump for AirPad Cushion	8.5" long; 2" Diameter	50ea/cs



**BETWEEN  
THE KNEES**



**UNDER  
THE ELBOW**



**BEHIND  
THE HEAD**



**ADDDITIONAL  
SUPPORT**



**SEATING  
SUPPORT**

## Cleaning Instructions and Maintenance:

**Storage and Operating Temperature: 23 °F to 104 °F**

**Cushion can be spot cleaned as needed:**

- Utilize a diluted EPA approved germicidal cleaning solution, quaternaries, alcohol (70% isopropyl of Ethyl) or bleach solution diluted 1:10, or your facility's approved solution
- Protective clothing and eye wear must be worn when handling contaminated items. Always follow facility protocol
- Always allow to air dry after spot cleaning

**Contact your Concordance Account Manager to learn about our newly expanded portfolio with hundreds of SKUs to serve the entire continuum of care!**

Baby Products • Custom Kits • Diagnostic • Exam Gloves • Exam Room Supplies  
Incontinence • Laboratory • Medication Delivery • Patient Mobility & Repositioning  
Aids • O.R. Products • Patient Apparel • Patient Care • Personal Care  
Personal Protection Equipment • Sharps Containers • Specialty Bags  
Specimen Bags • Therapy • Wound Care

**Samples available, contact your Concordance account manager today!**



**CONCORDANCE**  
HEALTHCARE SOLUTIONS



12/22/2025