



## Ostomy Pouches and Accessories





# IMPROVING LIVES IS OUR SPECIALTY

Our mission is simple, to improve the life of every person who uses our products.

## WHY CHOOSE US?

Together our team holds over 25 U.S. and worldwide patents on medical devices and process improvements. We are committed to making Fortis Medical Products the leader in medical product innovations that enhances patient care.

# INDEX

## Ostomy Accessories:

|                                    |       |
|------------------------------------|-------|
| Adhesive Removers .....            | 4     |
| Skin Barrier Films .....           | 5     |
| Skin Barrier Seals .....           | 6-9   |
| Ostomy Pastes .....                | 10-11 |
| Ostomy Powder .....                | 11    |
| Skin Barrier Extensions .....      | 12-14 |
| Skin Barrier Sheets .....          | 15    |
| Odor Eliminators.....              | 16-17 |
| Absorbent Gel Packets .....        | 17    |
| Ostomy Appliance Cleaner .....     | 18    |
| Ostomy Pouch Disposable Bags ..... | 18    |

## Pouches:

|                                    |       |
|------------------------------------|-------|
| One Piece Drainable Pouches.....   | 19-23 |
| One Piece Urostomy Pouches.....    | 23-24 |
| One Piece Closed End Pouches.....  | 24-25 |
| Stoma Caps.....                    | 25    |
| Barriers / Wafers .....            | 26-29 |
| Two Piece Drainable Pouches .....  | 29-30 |
| Two Piece Urostomy Pouches.....    | 30-31 |
| Two Piece Closed End Pouches ..... | 31    |

## ADHESIVE REMOVER SPRAY AND WIPES

### Adhesive Remover Spray - Alcohol Free, No Sting



The Entrust Adhesive Remover Pump Spray is a silicone-based formula that is sting-free and gentle on the skin. It quickly removes adhesive residue from the skin and helps release pouches, skin barriers, or other adhesive products.

| Item# | HCPCS | Packaging    | Per Case   |
|-------|-------|--------------|------------|
| 7104  | A4455 | 4 oz. Bottle | 25 Bottles |

### Adhesive Remover Wipes - Alcohol Free, No Sting



Entrust Adhesive Remover Wipes are silicone-based and sting-free. This skin-friendly product quickly removes adhesive residues from the skin.

| Item# | HCPCS | Packaging           | Per Case |
|-------|-------|---------------------|----------|
| 5100  | A4456 | 100 Sachets per box | 20 Boxes |

## SKIN BARRIER SPRAY AND WIPES

### Skin Barrier Film Spray - Alcohol Free, No Sting



Entrust Sting-free Skin Barrier Film Spray provides a transparent protective coating on the skin surface. It is ideal for the Crusting Technique and dries quickly. It protects the skin from damage associated with body waste, enzymes, and adhesives.

| Item# | HCPCS | Packaging    | Per Case   |
|-------|-------|--------------|------------|
| 7202  | A4369 | 2 oz. Bottle | 26 Bottles |

\*Use with Entrust Skin Barrier Powder to increase Crusting

### Skin Barrier Film Wipes - Alcohol Free, No Sting

Entrust Skin Barrier Film Wipes form a barrier on the skin surface to protect it from bodily waste, enzymes, and adhesives. They are ideal for Crusting.



| Item# | HCPCS | Packaging           | Per Case |
|-------|-------|---------------------|----------|
| 5200  | A5120 | 100 Sachets per box | 20 Boxes |

\*Use with Entrust Skin Barrier Powder to increase Crusting

## SKIN BARRIER SEALS



## Entrust Conforming Adhesive Seals

### Benefits:

- Turtleneck Effect Prevents Leaks
- Comfortable & Skin Friendly
- Highly Absorbent
- Easy to Mold & Stretch
- Durable, Longer Wear Time
- Easily Removable
- Excellent Adhesive Tack
- Stable During Hydration



- Non-silver based Antibacterial formula
- Fights and prevents MRSA, Candida and other skin pathogens within the dressing
- Patented and 510k cleared

### What is FortaGuard?

It's a patented antibacterial formula designed to minimize bacteria within the dressing.

## SKIN BARRIER SEALS

### Skin Barrier Seals - Thin

Entrust Conforming Seals are suitable for any type of Ostomy. These seals enhance the security and fit of your pouching system, preventing leaks and supporting healthy peristomal skin.



| Item# | HCPCS | Ring Outer Diameter | Packaging  | Per Case |
|-------|-------|---------------------|------------|----------|
| 6100  | A4385 | 2"                  | 20 per Box | 20 Boxes |
| 6000  | A4385 | 4"                  | 10 per Box | 20 Boxes |



**FORTAGUARD**  
Antibacterial

| Item# | HCPCS | Ring Outer Diameter | Packaging  | Per Case |
|-------|-------|---------------------|------------|----------|
| 6100F | A4385 | 2"                  | 20 per Box | 20 Boxes |
| 6000F | A4385 | 4"                  | 10 per Box | 20 Boxes |

SKIN BARRIER SEALS

Skin Barrier Seals - Standard

Entrust Conforming Seals: Standard thickness adds extra security and comfort to any pouching system, preventing ostomy drainage from getting under the pouch barrier. Each seal has an outer diameter of 2”.

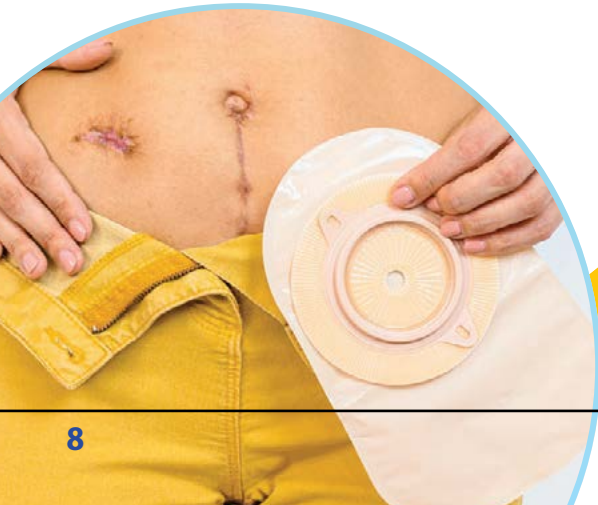


| Item# | HCPCS | Packaging  | Per Case |
|-------|-------|------------|----------|
| 6101  | A4385 | 20 per Box | 20 Boxes |



| Item# | HCPCS | Packaging  | Per Case |
|-------|-------|------------|----------|
| 6101F | A4385 | 20 Per Box | 20 Boxes |

Made in the U.S.A. by a Veteran Owned Business  
Proudly supporting local business and veterans





## SKIN BARRIER SEALS

### Skin Barrier Seals - Fortify



Entrust Fortify Seals are ideal for those with a Colostomy. These seals provide a secure and comfortable seal around the stoma to prevent leakage with minimal absorption of fluids. Stretches and molds easily to fit around the stoma. 2" Outer diameter.

| Item# | HCPCS | Packaging  | Per Case |
|-------|-------|------------|----------|
| 6102  | A4385 | 20 per Box | 20 Boxes |

### Skin Barrier Seals - Duet



Entrust Duet Seals are a dual layered formula ideal for all types of ostomies. Each side of the seal performs differently when placed against the skin to absorb more or less liquid to accommodate your stoma discharge. Easily stretches and molds around the stoma for a secure fit and extended wear time. 2" outer diameter.

| Item# | HCPCS | Packaging  | Per Case |
|-------|-------|------------|----------|
| 6103  | A4385 | 20 per Box | 20 Boxes |

# SKIN BARRIER PASTES

## Stoma Paste

Entrust Stoma Paste with Pectin is designed to be pliable for easy application around the stoma or for filling in gaps, scars, folds, and uneven skin surfaces. It is less sticky to the touch, and more adhesive to the skin, ensuring a good seal without leaving residue on your fingers.



| Item# | HCPSC | Packaging  | Per Case |
|-------|-------|------------|----------|
| 6300  | A4406 | 2 oz. Tube | 24 Tubes |



| Item# | HCPSC | Packaging  | Per Case |
|-------|-------|------------|----------|
| 6300F | A4406 | 2 oz. Tube | 24 Tubes |

## No Sting Skin Barrier Paste

Entrust No Sting Skin Barrier Paste is specially designed for sensitive skin. It contains no alcohol and helps minimize leaks by preventing ‘pancaking’. This paste also helps preserve the skin’s health around the stoma.



| Item# | HCPSC | Packaging  | Per Case |
|-------|-------|------------|----------|
| 6301  | A4406 | 2 oz. Tube | 24 Tubes |



| Item# | HCPSC | Packaging  | Per Case |
|-------|-------|------------|----------|
| 6301F | A4406 | 2 oz. Tube | 24 Tubes |

## SKIN BARRIER PASTES

### Fast Drying Stoma Paste

Entrust Fast Drying Stoma Paste is designed to quickly dry in place to provide a secure seal around the stoma, or used to fill in gaps and uneven surfaces eliminating leakage under the wafer.



| Item# | HCPCS | Packaging  | Per Case |
|-------|-------|------------|----------|
| 6302  | A4406 | 2 oz. Tube | 24 Tubes |

## OSTOMY POWDER

### Ostomy Protective Powder



The Entrust Stoma Powder is specially designed to protect the skin and help the pouching system adhere better. It fills in cracks and creases on the peristomal skin, creating a smooth surface. The powder can be easily applied using the puff bottle.

| Item# | HCPCS | Packaging    | Per Case   |
|-------|-------|--------------|------------|
| 6800  | A4371 | 1 oz. Bottle | 40 Bottles |

\*Use with Entrust Skin Barrier Paste to increase Crusting

SKIN BARRIER EXTENSIONS

Benefits:

- Pre-shaped Hydrocolloid for Easier Application
- Water-resistant to help prolong wear time
- Thin and Comfortable
- Skin Friendly
- Secure Fit
- Minimize Leaks
- Promotes Healing of Compromised Skin



Crescent Barrier Extensions

Entrust Crescent-Shaped Barrier Extensions are made with a gentle adhesive that's easy to put on and stretches with your skin so you can move around comfortably. They can also be used under appliances for additional skin protection. Use 3 crescent barriers per application.



| Item# | HCPCS | Packaging          | Per Case |
|-------|-------|--------------------|----------|
| 6200  | A4362 | 30 pieces per Tray | 50 Trays |



| Item# | HCPCS | Packaging          | Per Case |
|-------|-------|--------------------|----------|
| 6200F | A4362 | 30 pieces per Tray | 50 Trays |

## SKIN BARRIER EXTENSIONS

### "C" Shaped Barrier Extensions

Entrust "C"-shaped barrier Extensions are designed with a strong adhesive that is gentle to the skin. They are easy to apply, super thin, and stretch with the skin, allowing for freedom of movement. They are engineered specifically to be wider in the middle for enhanced adhesion. Use 2 "C"-shaped barriers per application.



| Item# | HCPCS | Packaging          | Per Case |
|-------|-------|--------------------|----------|
| 6210  | A4362 | 20 pieces per Tray | 50 Trays |



| Item# | HCPCS | Packaging          | Per Case |
|-------|-------|--------------------|----------|
| 6210F | A4362 | 20 pieces per Tray | 50 Trays |

### "Y" Shaped Barrier Extensions

Entrust "Y"-shaped barrier Extensions provide additional coverage to the skin surface, increasing security and comfort. The thin, pre-shaped hydrocolloid allows for easier and more secure pouch application. Use up to 2 extensions per application.



| Item# | HCPCS | Packaging          | Per Case |
|-------|-------|--------------------|----------|
| 6220  | A5121 | 30 pieces per Tray | 50 Trays |



| Item# | HCPCS | Packaging          | Per Case |
|-------|-------|--------------------|----------|
| 6220F | A5121 | 30 pieces per Tray | 50 Trays |

# SKIN BARRIER EXTENSIONS

## Extra Wide Barrier Extensions



Entrust Extra Wide Barrier Extensions are designed with a strong adhesive that is gentle to the skin. They are easy to apply, super thin, and stretch with the skin, allowing for freedom of movement. They are engineered specifically to be wider for enhanced adhesion and security. Use 3 extra wide barriers per application.

| Item# | HCPCS | Packaging          | Per Case |
|-------|-------|--------------------|----------|
| 6230  | A5121 | 30 pieces per Tray | 50 Trays |



| Item# | HCPCS | Packaging          | Per Case |
|-------|-------|--------------------|----------|
| 6230F | A5121 | 30 pieces per Tray | 50 Trays |



## SKIN BARRIER SHEETS

### Skin Barrier Sheets



Entrust Skin Barrier Sheets are a thin hydrocolloid shaped in a square to provide comfort under the pouching system. Absorbent sheets protect the skin from allergic reactions to pouch adhesives and will absorb moisture from broken weeping skin. Cut to fit, Non-sterile.

| Item# | Size  | HCPCS | Packaging | Per Case |
|-------|-------|-------|-----------|----------|
| 6702  | 2"x2" | A4362 | 10per Box | 10 Boxes |
| 6704  | 4"x4" | A4362 | 5 per Box | 10 Boxes |
| 6706  | 6"x6" | A5121 | 5 per Box | 10 Boxes |

### Skin Barrier Sheet Ultra



Entrust Skin Barrier Sheet Ultra are a thin hydrocolloid that contains Aloe and Zinc Oxide to soothe irritated skin and help prevent breakouts. Shaped in a square to provide comfort under the pouching system. Absorbent sheets protect the skin from allergic reactions to pouch adhesives and will absorb moisture from broken weeping skin. Cut to fit, Non-sterile.

| Item# | Size  | HCPCS | Packaging  | Per Case |
|-------|-------|-------|------------|----------|
| 6712  | 2"x2" | A4362 | 10 per Box | 10 Boxes |
| 6714  | 4"x4" | A4362 | 5 per Box  | 10 Boxes |
| 6716  | 6"x6" | A5121 | 5 per Box  | 10 Boxes |

## OSTOMY ODOR ELIMINATORS

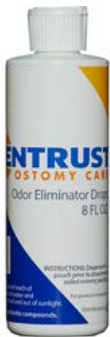
### Lubricating Odor Eliminator



Entrust Lubricating Odor Eliminator is specially formulated to be gentle on the stoma and tissue while effectively eliminating odor. It lubricates the pouch for easy draining and helps minimize “pancaking”. It also features an easy-to-control nozzle for convenient dispensing.

| Item# | HCPSCS | Packaging    | Per Case   |
|-------|--------|--------------|------------|
| 6401  | A4394  | 1 oz. Bottle | 24 Bottles |
| 6400  | A4394  | 8 oz. Bottle | 12 Bottles |

### Odor Eliminator



Entrust Odor Eliminator effectively eliminates odors without any extra scents. Its clear color makes it simple to keep track of the stoma, and the non-staining formula, along with the user-friendly dispenser nozzle, makes it a safe and convenient choice for any pouching system.

| Item# | HCPSCS | Packaging    | Per Case   |
|-------|--------|--------------|------------|
| 6601  | A4394  | 1 oz. Bottle | 24 Bottles |
| 6602  | A4394  | 4 oz. Bottle | 12 Bottles |
| 6600  | A4394  | 8 oz. Bottle | 12 Bottles |



## OSTOMY ODOR ELIMINATORS

### Blue Max Odor Eliminator



Entrust Blue Max Odor Eliminator has effective odor control with no perfumes or added scents for discreet protection. The Blue Max formula is appropriate for all types of ostomies. Use 5-10 drops in the pouch when the pouch is emptied or cleaned.

| Item# | HCPCS | Packaging    | Per Case   |
|-------|-------|--------------|------------|
| 6502  | A4394 | 2 oz. Bottle | 24 Bottles |
| 6504  | A4394 | 4 oz. Bottle | 12 Bottles |
| 6508  | A4394 | 8 oz. Bottle | 12 Bottles |

## ABSORBENT GEL PACKETS

### Ile-Clean Antibacterial Absorbent Gel Packets

Entrust Ile-Clean Antibacterial Absorbent Gel Packets are ideal for those with an ileostomy. The packet will dissolve upon contact with discharges and create a gel to ease in emptying the pouching system. Contains Hydrogen Peroxide as an antibacterial agent.

**COMING  
SOON!**

| Item# | HCPCS | Packaging   | Per Case |
|-------|-------|-------------|----------|
| 6801  | A4422 | 135 Packets |          |

## OSTOMY APPLIANCE CLEANER

### Appliance Cleaner



Entrust Ostomy Appliance Cleaner is specifically formulated to effectively clean and deodorize the interior of ostomy and urinary bags, ensuring clear visibility of the stoma. When paired with our Entrust Odor Eliminator, it delivers effortless cleaning and superior odor control between cleanings.

| Item# | HCPCS | Packaging     | Per Case   |
|-------|-------|---------------|------------|
| 6450  | A5131 | 16 oz. Bottle | 12 Bottles |

## OSTOMY POUCH DISPOSABLE BAGS

### Disposable Bags



Ostomy Disposable Bags provide a discreet and convenient way to dispose of used ostomy appliances. TIP: Add a little odor eliminator in the pouch before placing it in the disposal bag for additional odor control.

| Item# | HCPCS | Packaging       | Per Case    |
|-------|-------|-----------------|-------------|
| 6903  | A9999 | 60 (8"x8") Bags | 23 Packages |



## **Entrust Pouch Selections**

The Pinnacle of comfort and efficiency for ostomy care.  
One-piece and two-piece pouch options for all types  
of ostomies by Entrust Ostomy Care.

ENTRUST ONE-PIECE DRAINABLE POUCHES-CLIP CLOSURE



Our one-piece, drainable pouching systems are designed to be open at the bottom for easy emptying. These pouches are suitable for ileostomies and colostomies. There are many pouch options available for standard and extended wear use.

Box of 10 | Transparent | Standard Wear | 12" Drainable

| Item# | HCPCS | Barrier Type | Cut-to-Fit or Pre-Cut Size | Pouch Length | Filter | Comfort Panel | Belt Tabs |
|-------|-------|--------------|----------------------------|--------------|--------|---------------|-----------|
| 1100  | A5061 | Flat         | CTF: 3/4"-2 1/2"           | 12"          | No     | 1/sided       | No        |
| 1101  | A5061 | Flat         | 3/4" PC                    | 12"          | No     | 1/sided       | No        |
| 1102  | A5061 | Flat         | 1" PC                      | 12"          | No     | 1/sided       | No        |
| 1103  | A5061 | Flat         | 1 1/4" PC                  | 12"          | No     | 1/sided       | No        |
| 1104  | A5061 | Flat         | 1 1/2" PC                  | 12"          | No     | 1/sided       | No        |
| 1105  | A5061 | Flat         | 1 3/4" PC                  | 12"          | No     | 1/sided       | No        |
| 1106  | A5061 | Flat         | 2" PC                      | 12"          | No     | 1/sided       | No        |
| 1107  | A5061 | Flat         | 2 1/4" PC                  | 12"          | No     | 1/sided       | No        |
| 1108  | A5061 | Flat         | 2 1/2" PC                  | 12"          | No     | 1/sided       | No        |

Box of 10 | Transparent | Standard Wear | 12" Drainable | With Fortaguard



| Item# | HCPCS | Barrier Type | Cut-to-Fit Size  | Pouch Length | Filter | Comfort Panel | Belt Tabs |
|-------|-------|--------------|------------------|--------------|--------|---------------|-----------|
| 1100F | A5061 | Flat         | CTF: 3/4"-2 1/2" | 12"          | No     | 1/sided       | No        |



### Box of 10 | Transparent | Standard Wear | 9" Drainable

| Item# | HCPCS | Barrier Type | Cut-to-Fit Size     | Pouch Length | Filter | Comfort Panel | Belt Tabs |
|-------|-------|--------------|---------------------|--------------|--------|---------------|-----------|
| 1500  | A5061 | Flat         | CTF:<br>3/4"-2 1/2" | 9"           | No     | 1/sided       | No        |

### Box of 10 | Transparent | Extended Wear | With Dual Hydrocolloid | 12" Drainable

| Item# | HCPCS | Barrier Type | Cut-to-Fit or Pre-Cut Size | Pouch Length | Filter | Comfort Panel | Belt Tabs |
|-------|-------|--------------|----------------------------|--------------|--------|---------------|-----------|
| 1200  | A4388 | Flat         | CTF:<br>3/4"-2 1/2"        | 12"          | No     | 1/sided       | No        |
| 1200V | A4388 | Flat         | CTF:<br>3/4"-2 1/2"        | 12"          | No     | 1/sided       | No        |
| 1200X | A5056 | Flat         | CTF:<br>3/4"-2 1/2"        | 12"          | Yes    | 1/sided       | No        |
| 1201  | A4388 | Flat         | 3/4" PC                    | 12"          | No     | 1/sided       | No        |
| 1202  | A4388 | Flat         | 1" PC                      | 12"          | No     | 1/sided       | No        |
| 1203  | A4388 | Flat         | 1 1/4" PC                  | 12"          | No     | 1/sided       | No        |
| 1204  | A4388 | Flat         | 1 1/2" PC                  | 12"          | No     | 1/sided       | No        |
| 1205  | A4388 | Flat         | 1 3/4" PC                  | 12"          | No     | 1/sided       | No        |
| 1206  | A4388 | Flat         | 2" PC                      | 12"          | No     | 1/sided       | No        |
| 1207  | A4388 | Flat         | 2 1/4" PC                  | 12"          | No     | 1/sided       | No        |
| 1208  | A4388 | Flat         | 2 1/2" PC                  | 12"          | No     | 1/sided       | No        |

V = Velcro Closure    X = Charcoal Filter

ENTRUST ONE-PIECE DRAINABLE POUCHES-CLIP CLOSURE



Box of 10 | Transparent | Extended Wear  
With Dual Hydrocolloid | Convex | 12" Drainable

| Item#   | HCPCS | Barrier Type | Pre-Cut Size | Pouch Length | Filter | Comfort Panel | Belt Tabs |
|---------|-------|--------------|--------------|--------------|--------|---------------|-----------|
| 12034C  | A4390 | Convex       | 3/4" PC      | 12"          | No     | 1/sided       | Yes       |
| 12078C  | A4390 | Convex       | 7/8" PC      | 12"          | No     | 1/sided       | Yes       |
| 12100C  | A4390 | Convex       | 1" PC        | 12"          | No     | 1/sided       | Yes       |
| 12112CX | A5057 | Convex       | 1 1/2" PC    | 12"          | Yes    | 1/sided       | Yes       |
| 12114C  | A4390 | Convex       | 1 1/4" PC    | 12"          | No     | 1/sided       | Yes       |
| 12114CX | A5057 | Convex       | 1 1/4" PC    | 12"          | Yes    | 1/sided       | Yes       |
| 12118C  | A4390 | Convex       | 1 1/8" PC    | 12"          | No     | 1/sided       | Yes       |
| 12134CX | A5057 | Convex       | 1 3/4" PC    | 12"          | Yes    | 1/sided       | Yes       |



Box of 10 | Beige | Standard Wear | 12" Drainable

| Item# | HCPCS | Barrier Type | Cut-to-Fit Size     | Pouch Length | Filter | Comfort Panel | Belt Tabs |
|-------|-------|--------------|---------------------|--------------|--------|---------------|-----------|
| 1300  | A5061 | Flat         | CTF:<br>3/4"-2 1/2" | 12"          | No     | 1/sided       | No        |
| 1300X | A4424 | Flat         | CTF:<br>3/4"-2 1/2" | 12"          | Yes    | 1/sided       | No        |

## ENTRUST ONE-PIECE DRAINABLE POUCHES-CLIP CLOSURE

Box of 10 | Beige | Standard Wear  
With Fortaguard | 12" Drainable

FORTAGUARD  
Antibacterial



| Item#  | HCPCS | Barrier Type | Cut-to-Fit Size     | Pouch Length | Filter | Comfort Panel | Belt Tabs |
|--------|-------|--------------|---------------------|--------------|--------|---------------|-----------|
| 1300FX | A4424 | Flat         | CTF:<br>3/4"-2 1/2" | 12"          | Yes    | 1/sided       | No        |

Box of 10 | Beige | Extended Wear | With Dual Hydrocolloid | 12" Drainable

| Item# | HCPCS | Barrier Type | Cut-to-Fit Size     | Pouch Length | Filter | Comfort Panel | Belt Tabs |
|-------|-------|--------------|---------------------|--------------|--------|---------------|-----------|
| 1400  | A4388 | Flat         | CTF:<br>3/4"-2 1/2" | 12"          | No     | 1/sided       | No        |
| 1400V | A4388 | Flat         | CTF:<br>3/4"-2 1/2" | 12"          | No     | 1/sided       | No        |
| 1400X | A5056 | Flat         | CTF:<br>3/4"-2 1/2" | 12"          | Yes    | 1/sided       | No        |

V = Velcro Closure    X = Charcoal Filter

## ENTRUST ONE-PIECE UROSTOMY POUCHES - DRAIN/CAP



Our one-piece urostomy pouching systems are designed with a drain and cap for easy emptying and are suitable for any urostomy.

Box of 10 | Transparent | Extended Wear | With Dual Hydrocolloid

| Item# | HCPCS | Barrier Type | Cut-to-Fit Size     | Pouch Length | Filter | Comfort Panel | Belt Tabs |
|-------|-------|--------------|---------------------|--------------|--------|---------------|-----------|
| 1700  | A4391 | Flat         | CTF:<br>3/4"-2 1/2" | 9"           | No     | 1/sided       | No        |

ENTRUST ONE-PIECE UROSTOMY POUCHES - DRAIN/CAP



Box of 10 | Transparent | Extended Wear  
With Dual Hydrocolloid | Convex

| Item#  | HCPCS | Barrier Type | Pre-Cut Size | Pouch Length | Filter | Comfort Panel | Belt Tabs |
|--------|-------|--------------|--------------|--------------|--------|---------------|-----------|
| 17034C | A4393 | Convex       | 3/4" PC      | 9"           | No     | 1/sided       | Yes       |
| 17078C | A4393 | Convex       | 7/8" PC      | 9"           | No     | 1/sided       | Yes       |
| 17100C | A4393 | Convex       | 1" PC        | 9"           | No     | 1/sided       | Yes       |
| 17112C | A4393 | Convex       | 1 1/2" PC    | 9"           | No     | 1/sided       | Yes       |
| 17114C | A4393 | Convex       | 1 1/4" PC    | 9"           | No     | 1/sided       | Yes       |
| 17118C | A4393 | Convex       | 1 1/8" PC    | 9"           | No     | 1/sided       | Yes       |
| 17134C | A4393 | Convex       | 1 3/4" PC    | 9"           | No     | 1/sided       | Yes       |

ENTRUST ONE-PIECE CLOSED END POUCHES



Our one-piece, closed end pouch is designed to be removed after use. The pouches are suitable for colostomies or for stomas with less frequent or more predictable output.

Box of 30 | Transparent | Standard Wear

| Item# | HCPCS | Barrier Type | Cut-to-Fit Size     | Pouch Length | Filter | Comfort Panel | Belt Tabs |
|-------|-------|--------------|---------------------|--------------|--------|---------------|-----------|
| 4100X | A4416 | Flat         | CTF:<br>3/4"-2 1/2" | 8"           | Yes    | 1/sided       | No        |



## ENTRUST ONE-PIECE CLOSED END POUCHES



Box of 30 | Beige | Standard Wear

| Item# | HCPSC | Barrier Type | Cut-to-Fit Size     | Pouch Length | Filter | Comfort Panel | Belt Tabs |
|-------|-------|--------------|---------------------|--------------|--------|---------------|-----------|
| 4200X | A4416 | Flat         | CTF:<br>3/4"-2 1/2" | 8"           | Yes    | 1/sided       | No        |

## ENTRUST STOMA CAPS



Our one-piece stoma caps are designed for temporary use during intimacy, swimming, showers, or if you irrigate your stoma and control the output times and only require a small cover.

Box of 30 | Beige | Standard Wear

| Item# | HCPSC | Barrier Type | Cut-to-Fit Size     | Pouch Length | Filter | Comfort Panel | Belt Tabs |
|-------|-------|--------------|---------------------|--------------|--------|---------------|-----------|
| 4400  | A5055 | Flat         | CTF:<br>3/4"-2 1/2" | 5"           | No     | 2/sided       | No        |
| 4400X | A5055 | Flat         | CTF:<br>3/4"-2 1/2" | 5"           | Yes    | 2/sided       | No        |

ENTRUST BARRIERS/WAFERS

Our pouch barrier/wafers are designed to create a secure seal and protect the peristomal skin. They come in different styles to accommodate various stoma types and adhesive preferences.

Box of 10 | Standard Wear | Tape Collar White | 4"x4"

| Item#  | HCPCS | Barrier Type | Cut-to-Fit Size  | Flange Size   |
|--------|-------|--------------|------------------|---------------|
| 21134W | A4414 | Flat         | CTF: 3/4"-1 1/4" | 1 3/4" Flange |
| 21214W | A4414 | Flat         | CTF: 3/4"-1 3/4" | 2 1/4" Flange |



Box of 10 | Standard Wear | Tape Collar White | 5"x5"

| Item#  | HCPCS | Barrier Type | Cut-to-Fit Size  | Flange Size   |
|--------|-------|--------------|------------------|---------------|
| 21234W | A4414 | Flat         | CTF: 3/4"-2 1/4" | 2 3/4" Flange |

Box of 5 | Extended Wear | With Dual Hydrocolloid | 4"x4"

| Item#  | HCPCS | Barrier Type | Cut-to-Fit Size  | Flange Size   |
|--------|-------|--------------|------------------|---------------|
| 22134W | A4409 | Flat         | CTF: 3/4"-1 1/4" | 1 3/4" Flange |
| 22214W | A4409 | Flat         | CTF: 3/4"-1 3/4" | 2 1/4" Flange |



Box of 10 | Extend Wear | With Dual Hydrocolloid | 5"x5"

| Item#  | HCPCS | Barrier Type | Cut-to-Fit Size  | Flange Size   |
|--------|-------|--------------|------------------|---------------|
| 22234W | A4410 | Flat         | CTF: 3/4"-2 1/4" | 2 3/4" Flange |

Box of 10 | Standard Wear | Tape Collar Beige | 4 1/4"x4 1/4"

| Item#    | HCPCS | Barrier Type | Cut-to-Fit or Pre-Cut Size | Flange Size   |
|----------|-------|--------------|----------------------------|---------------|
| 25134B   | A4415 | Flat         | CTF: 3/4"-1 1/4"           | 1 3/4" Flange |
| 23134B10 | A4415 | Flat         | 1" PC                      | 1 3/4" Flange |
| 23134B14 | A4415 | Flat         | 1 1/4" PC                  | 1 3/4" Flange |



## ENTRUST BARRIERS/WAFERS

### Box of 10 | Standard Wear | Tape Collar Beige | 4 1/4"x4 1/4" (Continued)

| Item#    | HCPCS | Barrier Type | Cut-to-Fit or Pre-Cut Size | Flange Size   |
|----------|-------|--------------|----------------------------|---------------|
| 23134B18 | A4415 | Flat         | 1 1/8" PC                  | 1 3/4" Flange |
| 23134B78 | A4415 | Flat         | 7/8" PC                    | 1 3/4" Flange |



### Box of 10 | Standard Wear | Tape Collar White | 4 1/4"x4 1/4"

| Item#  | HCPCS | Barrier Type | Cut-to-Fit Size  | Flange Size   |
|--------|-------|--------------|------------------|---------------|
| 23134W | A4415 | Flat         | CTF: 3/4"-1 1/4" | 1 3/4" Flange |



### Box of 5 | Extended Wear | With Dual Hydrocolloid | 4 1/4"x4 1/4"

| Item#  | HCPCS | Barrier Type | Cut-to-Fit Size  | Flange Size   |
|--------|-------|--------------|------------------|---------------|
| 24134W | A4410 | Flat         | CTF: 3/4"-1 1/4" | 1 3/4" Flange |



### Box of 5 | Extended Wear | With Dual Hydrocolloid | 5"x5"

| Item#  | HCPCS | Barrier Type | Cut-to-Fit Size  | Flange Size   |
|--------|-------|--------------|------------------|---------------|
| 26214W | A4410 | Flat         | CTF: 3/4"-1 3/4" | 2 1/4" Flange |
| 26234W | A4410 | Flat         | CTF: 3/4"-2 1/4" | 2 3/4" Flange |



### Box of 10 | Standard Wear | Tape Collar Beige | 5"x5"

| Item#  | HCPCS | Barrier Type | Cut-to-Fit Size  | Flange Size   |
|--------|-------|--------------|------------------|---------------|
| 25214B | A4415 | Flat         | CTF: 3/4"-1 3/4" | 2 1/4" Flange |
| 25234B | A4415 | Flat         | CTF: 3/4"-2 1/4" | 2 3/4" Flange |



ENTRUST BARRIERS/WAFERS

Box of 10 | Standard Wear | Tape Collar White | 5"x5"

| Item#  | HCPCS | Barrier Type | Cut-to-Fit Size     | Flange Size      |
|--------|-------|--------------|---------------------|------------------|
| 25214W | A4415 | Flat         | CTF:<br>3/4"-1 3/4" | 2 1/4"<br>Flange |
| 25234W | A4415 | Flat         | CTF:<br>3/4"-2 1/4" | 2 3/4"<br>Flange |



Box of 5 | Standard Wear | Tape Collar White | 5"x5" | Convex

| Item#     | HCPCS | Barrier Type | Cut-to-Fit or Pre-Cut Size | Flange Size      |
|-----------|-------|--------------|----------------------------|------------------|
| 25134CW   | A4373 | Convex       | CTF:<br>3/4"-1"            | 1 3/4"<br>Flange |
| 25134CW10 | A4373 | Convex       | 1" PC                      | 1 3/4"<br>Flange |
| 25214CW   | A4373 | Convex       | CTF:<br>3/4"-1 3/8"        | 2 1/4"<br>Flange |
| 25234CW   | A4373 | Convex       | CTF:<br>3/4"-1 7/8"        | 2 3/4"<br>Flange |



Box of 5 | Extended Wear | With Dual Hydrocolloid | 5"x5" | Convex

| Item#     | HCPCS | Barrier Type | Pre-Cut Size | Flange Size      |
|-----------|-------|--------------|--------------|------------------|
| 26134CW10 | A4408 | Convex       | 1" PC        | 1 3/4"<br>Flange |
| 26134CW34 | A4408 | Convex       | 3/4" PC      | 1 3/4"<br>Flange |
| 26134CW78 | A4408 | Convex       | 7/8" PC      | 1 3/4"<br>Flange |
| 26214CW14 | A4408 | Convex       | 1 1/4" PC    | 2 1/4"<br>Flange |
| 26214CW18 | A4408 | Convex       | 1 1/8" PC    | 2 1/4"<br>Flange |
| 26214CW38 | A4408 | Convex       | 1 3/8" PC    | 2 1/4"<br>Flange |



## ENTRUST BARRIERS/WAFERS

Box of 5 | Standard Wear | Tape Collar Beige | 5"x5" | Convex

| Item#   | HCPCS | Barrier Type | Cut-to-Fit Size | Flange Size      |
|---------|-------|--------------|-----------------|------------------|
| 25134CB | A4373 | Convex       | CTF:<br>3/4"-1" | 1 3/4"<br>Flange |



## ENTRUST TWO-PIECE DRAINABLE POUCHES - CLIP CLOSURE



Our two-piece drainable pouching systems are designed to create a secure, accurate closure with a simple snap together design to fit the barrier/wafer of your choice. Designed for easy emptying.

Box of 10 | Transparent | 12" Drainable

V = Velcro Closure  
X = Charcoal Filter

| Item#  | HCPCS | Flange Size | Pouch Length | Filter | Comfort Panel | Belt Tabs |
|--------|-------|-------------|--------------|--------|---------------|-----------|
| 31134  | A5063 | 1 3/4"      | 12"          | No     | 1/sided       | Yes       |
| 31134V | A5063 | 1 3/4"      | 12"          | No     | 1/sided       | Yes       |
| 31134X | A4425 | 1 3/4"      | 12"          | Yes    | 1/sided       | Yes       |
| 31214  | A5063 | 2 1/4"      | 12"          | No     | 1/sided       | Yes       |
| 31214V | A5063 | 2 1/4"      | 12"          | No     | 1/sided       | Yes       |
| 31214X | A4425 | 2 1/4"      | 12"          | Yes    | 1/sided       | Yes       |
| 31234  | A5063 | 2 3/4"      | 12"          | No     | 1/sided       | Yes       |
| 31234V | A5063 | 2 3/4"      | 12"          | No     | 1/sided       | Yes       |
| 31234X | A4425 | 2 3/4"      | 12"          | Yes    | 1/sided       | Yes       |

ENTRUST TWO-PIECE DRAINABLE POUCHES - CLIP CLOSURE

Box of 10 | Beige | 12" Drainable

V = Velcro Closure



| Item#  | HCPCS | Flange Size | Pouch Length | Filter | Comfort Panel | Belt Tabs |
|--------|-------|-------------|--------------|--------|---------------|-----------|
| 32134  | A5063 | 1 3/4"      | 12"          | No     | 1/sided       | Yes       |
| 32134V | A5063 | 1 3/4"      | 12"          | No     | 1/sided       | Yes       |
| 32214  | A5063 | 2 1/4"      | 12"          | No     | 1/sided       | Yes       |
| 32214V | A5063 | 2 1/4"      | 12"          | No     | 1/sided       | Yes       |
| 32234  | A5063 | 2 3/4"      | 12"          | No     | 1/sided       | Yes       |
| 32234V | A5063 | 2 3/4"      | 12"          | No     | 1/sided       | Yes       |

Box of 10 | Beige | 9" Drainable



| Item# | HCPCS | Flange Size | Pouch Length | Filter | Comfort Panel | Belt Tabs |
|-------|-------|-------------|--------------|--------|---------------|-----------|
| 34134 | A5063 | 1 3/4"      | 9"           | No     | 1/sided       | Yes       |
| 34214 | A5063 | 2 1/4"      | 9"           | No     | 1/sided       | Yes       |
| 34234 | A5063 | 2 3/4"      | 9"           | No     | 1/sided       | Yes       |

ENTRUST TWO-PIECE UROSTOMY POUCHES - DRAIN/CAP



Our two-piece urostomy pouching systems are designed with a drain and cap for easy emptying and a soft bodyside comfort panel. Fits with the barrier/wafer of your choice of adhesives. These pouches are suitable for any urostomy.

Box of 10 | Transparent | 9" Drain/Cap

| Item#  | HCPCS | Flange Size | Pouch Length | Filter | Comfort Panel | Belt Tabs |
|--------|-------|-------------|--------------|--------|---------------|-----------|
| 37134U | A5073 | 1 3/4"      | 9"           | No     | 1/sided       | Yes       |
| 37214U | A5073 | 2 1/4"      | 9"           | No     | 1/sided       | Yes       |
| 37234U | A5073 | 2 3/4"      | 9"           | No     | 1/sided       | Yes       |

## ENTRUST TWO-PIECE UROSTOMY POUCHES - DRAIN/CAP

### Box of 10 | Beige | 9" Drain/Cap

| Item#  | HCPCS | Flange Size | Pouch Length | Filter | Comfort Panel | Belt Tabs |
|--------|-------|-------------|--------------|--------|---------------|-----------|
| 38134U | A5073 | 1 3/4"      | 9"           | No     | 1/sided       | Yes       |
| 38214U | A5073 | 2 1/4"      | 9"           | No     | 1/sided       | Yes       |

## ENTRUST TWO-PIECE CLOSED END POUCHES




Our two-piece closed end pouches allows users to quickly change their pouches without having to change their barrier/wafers. The pouches are suitable for colostomies or for stomas with less frequent or more predictable output.

### Box of 30 | Beige | 8" Closed

| Item#  | HCPCS | Flange Size | Pouch Length | Filter | Comfort Panel | Belt Tabs |
|--------|-------|-------------|--------------|--------|---------------|-----------|
| 36134  | A5054 | 1 3/4"      | 8"           | No     | 1/sided       | Yes       |
| 36134X | A4419 | 1 3/4"      | 8"           | Yes    | 1/sided       | Yes       |
| 36214  | A5054 | 2 1/4"      | 8"           | No     | 1/sided       | Yes       |
| 36214X | A4419 | 2 1/4"      | 8"           | Yes    | 1/sided       | Yes       |
| 36234  | A5054 | 2 3/4"      | 8"           | No     | 1/sided       | Yes       |
| 36234X | A4419 | 2 3/4"      | 8"           | Yes    | 1/sided       | Yes       |

## Want a Sample?

We are happy to send you a Sample Kit to get you started with our products, please reach out to us and let us know more about your situation.



Available thru:  
Major Distributors  
Online  
Direct Accounts



1451 Sarasota Ctr. Blvd. | Sarasota, FL 34240  
855-550-2600 Office  
[info@fortismp.com](mailto:info@fortismp.com) | [www.fortismp.com](http://www.fortismp.com)